



# COVID LOCAL

A Frontline Guide for Local Decision-Makers

---

Metrics overview  
July 2020



Infection Rate



Diagnostic Testing & Surveillance



Case & Contact Investigations



Healthcare Readiness



Protecting At-Risk Populations

Rates & New Cases Decreasing

PHASES FOR RE-OPENING

< 1% positive of tests conducted (daily)

Current estimate of < 1 case per 100,000 population per day

4

Phase 4: New normal

- Maximal return to normalcy that is viable prior to herd immunity via widespread vaccination
- Community transmission is well monitored and virus flare-ups are contained rapidly
- Most high-risk/low criticality functions can resume

Continued decline in daily cases

< 3% positive of tests conducted (daily)

Current estimate of < 10 cases per 100,000 population per day

3

Phase 3: Economic recovery

- Widely re-opening economic and social functions once transmission has declined and is suppressed
- Moderate-sized gatherings and activities in enclosed spaces possible with appropriate mitigation
- Continue to prohibit large gatherings
- Telework should continue wherever feasible

Sustained decline in daily cases for 21 consecutive days, as reflected in the 5-day rolling average

< 10% positive of tests conducted (daily)

Current estimate of < 25 cases per 100,000 population per day

2

Phase 2: Initial re-opening

- Limited number of critically important activities open
- Continue to prohibit gatherings in enclosed spaces
- Some outdoor activities with appropriate distancing
- Telework should continue wherever feasible

Rates & New Cases Increasing

1

Phase 1: Maximum social-distancing

Tailored to each community, focus is on reducing person-to-person transmission and decreasing the burden on the healthcare system



LOCKDOWN



Infection Rate



Diagnostic Testing & Surveillance



Case & Contact Investigations



Healthcare Readiness



Protecting At-Risk Populations

Faster & Widely Available

PHASES FOR RE-OPENING

All symptomatic people, all asymptomatic high-risk individuals or contacts, and anyone who requests a test/any physician who orders a test can access testing

Tests are readily available for all essential personnel

Majority of test results are returned within 24 hours

Sufficient number of tests per day

4

Phase 4: New normal

- Maximal return to normalcy that is viable prior to herd immunity via widespread vaccination
- Community transmission is well monitored and virus flare-ups are contained rapidly
- Most high-risk/low criticality functions can resume

All symptomatic people, all asymptomatic high-risk individuals or contacts can access testing

Tests are readily available for all essential personnel

Majority of test results are returned within 24 hours

Increasing number of tests per day; nearing sufficiency

3

Phase 3: Economic recovery

- Widely re-opening economic and social functions once transmission has declined and is suppressed
- Moderate-sized gatherings and activities in enclosed spaces possible with appropriate mitigation
- Continue to prohibit large gatherings
- Telework should continue wherever feasible

All symptomatic people, all asymptomatic high-risk individuals or contacts can access testing

Tests are readily available for all essential personnel

Majority of test results are returned within 48 hours

Increasing number of tests per day

2

Phase 2: Initial re-opening

- Limited number of critically important activities open
- Continue to prohibit gatherings in enclosed spaces
- Some outdoor activities with appropriate distancing
- Telework should continue wherever feasible

Slower and Less Available

1

Phase 1: Maximum social-distancing

Tailored to each community, focus is on reducing person-to-person transmission and decreasing the burden on the healthcare system



LOCKDOWN



**Infection Rate**



**Diagnostic Testing & Surveillance**



**Case & Contact Investigations**



**Healthcare Readiness**



**Protecting At-Risk Populations**

PHASES FOR RE-OPENING

More Contacts Managed



95% of close contacts are elicited, located, tested within 24 hours

At least 30 contact tracers per 100,000, as well as case managers, care resource coordinators, community health workers

At least 90% of new cases from identified contacts

4

**Phase 4: New normal**

- Maximal return to normalcy that is viable prior to herd immunity via widespread vaccination
- Community transmission is well monitored and virus flare-ups are contained rapidly
- Most high-risk/low criticality functions can resume

90% of close contacts are elicited, located, tested within 24 hours

At least 30 contact tracers per 100,000, as well as case managers, care resource coordinators, community health workers

At least 80% of new cases from identified contacts

3

**Phase 3: Economic recovery**

- Widely re-opening economic and social functions once transmission has declined and is suppressed
- Moderate-sized gatherings and activities in enclosed spaces possible with appropriate mitigation
- Continue to prohibit large gatherings
- Telework should continue wherever feasible

75% of close contacts are elicited, located, tested within 24 hours

At least 30 contact tracers per 100,000, as well as case managers, care resource coordinators, community health workers

At least 60% of new cases from identified contacts

2

**Phase 2: Initial re-opening**

- Limited number of critically important activities open
- Continue to prohibit gatherings in enclosed spaces
- Some outdoor activities with appropriate distancing
- Telework should continue wherever feasible

Fewer Contacts Managed



1

**Phase 1: Maximum social-distancing**

Tailored to each community, focus is on reducing person-to-person transmission and decreasing the burden on the healthcare system



LOCKDOWN



**Infection Rate**



**Diagnostic Testing & Surveillance**



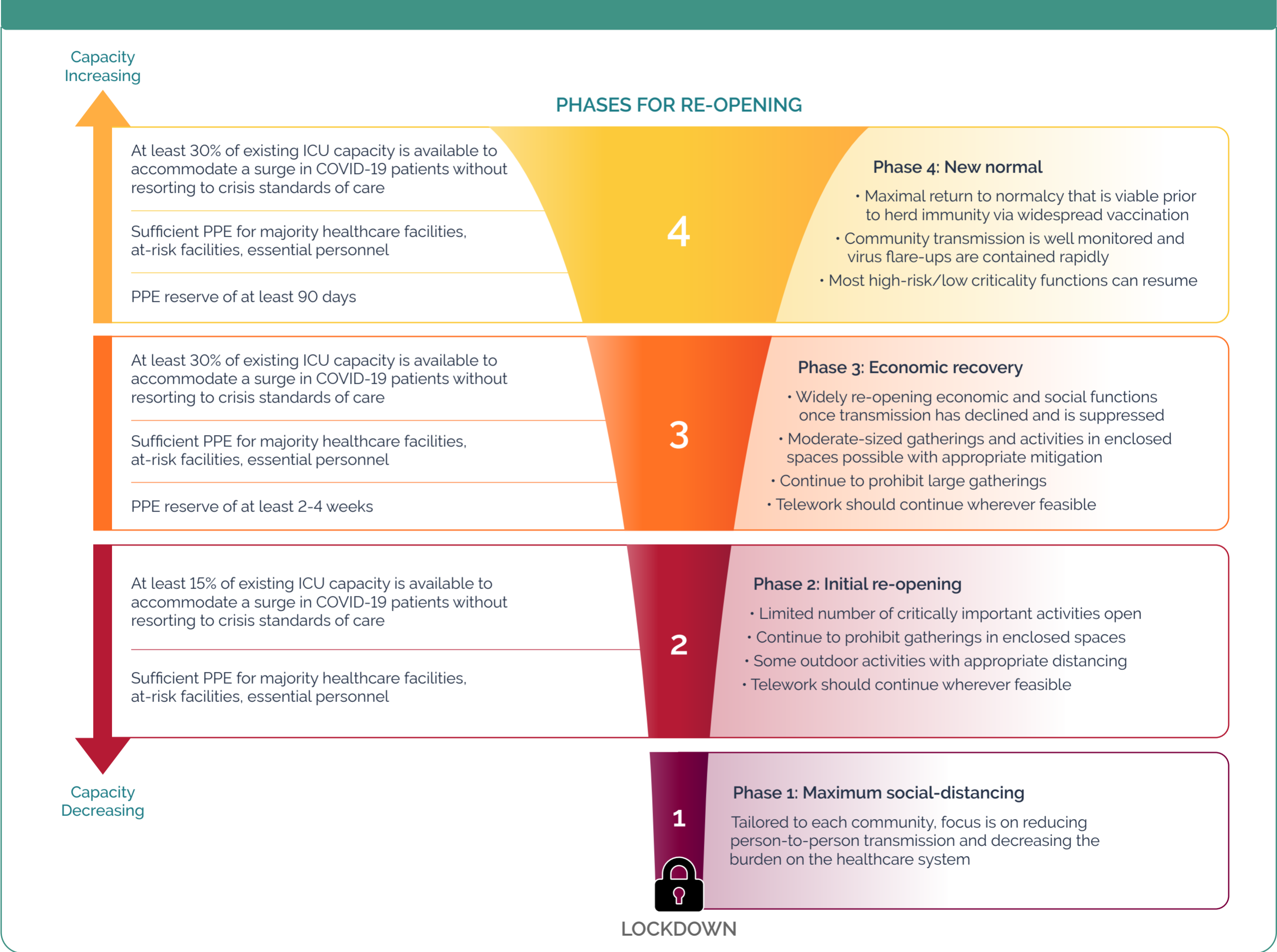
**Case & Contact Investigations**



**Healthcare Readiness**



**Protecting At-Risk Populations**





**Infection Rate**



**Diagnostic Testing & Surveillance**



**Case & Contact Investigations**



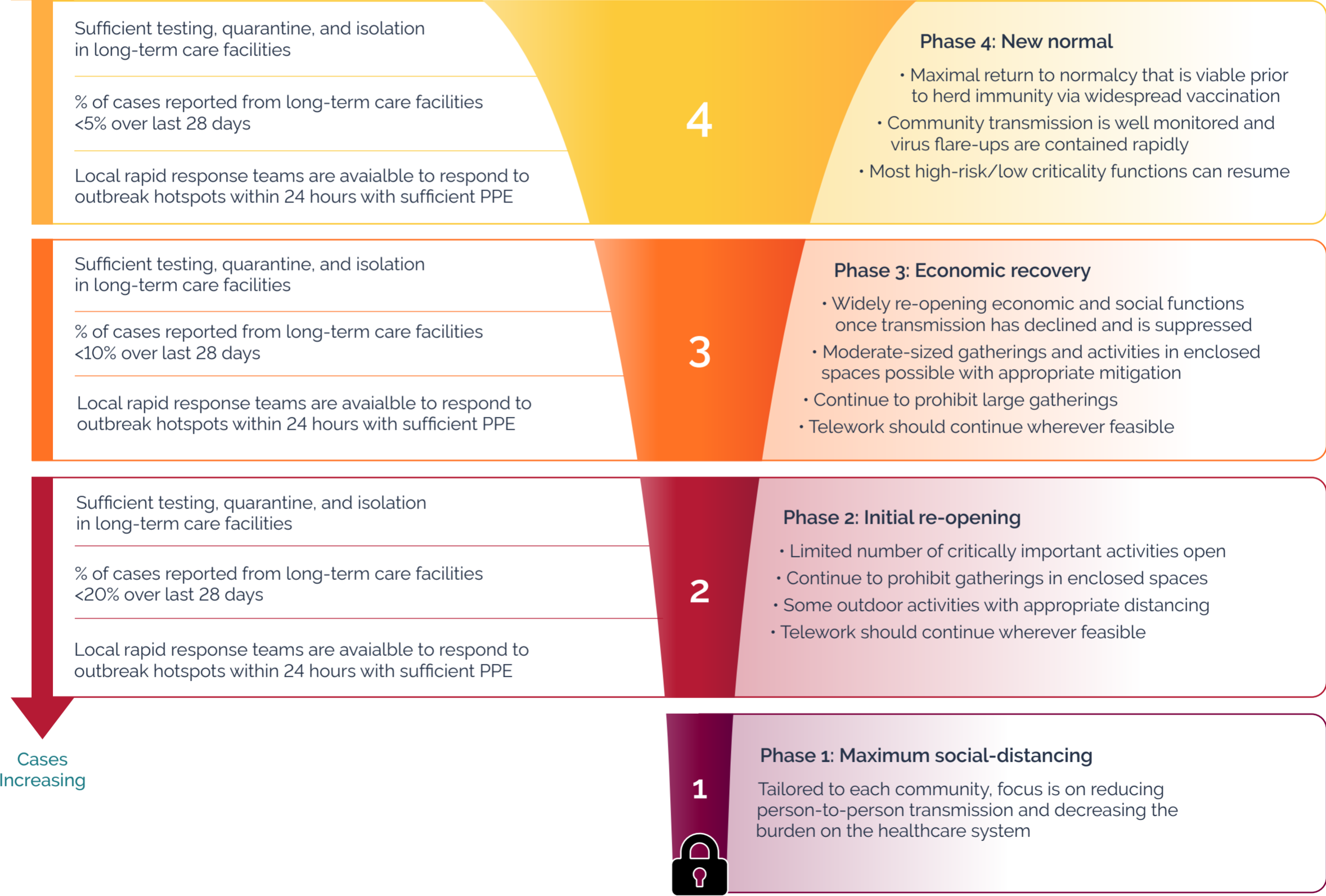
**Healthcare Readiness**



**Protecting At-Risk Populations**

Cases Decreasing

**PHASES FOR RE-OPENING**



**LOCKDOWN**

Cases Increasing